

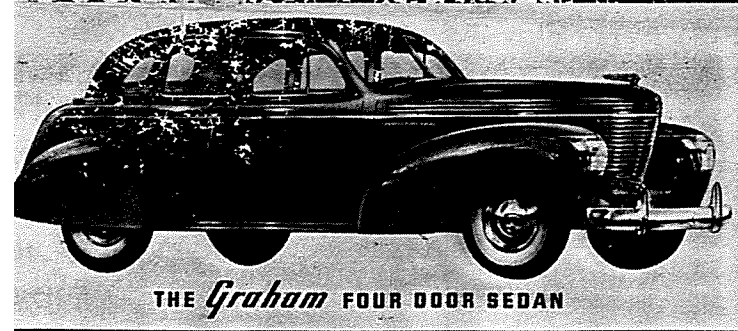
THE NEW **GRAHAM** FOR 1944



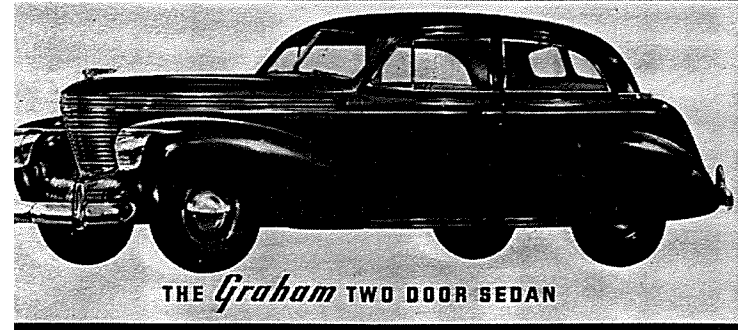
THE *Graham* CONVERTIBLE COUPE



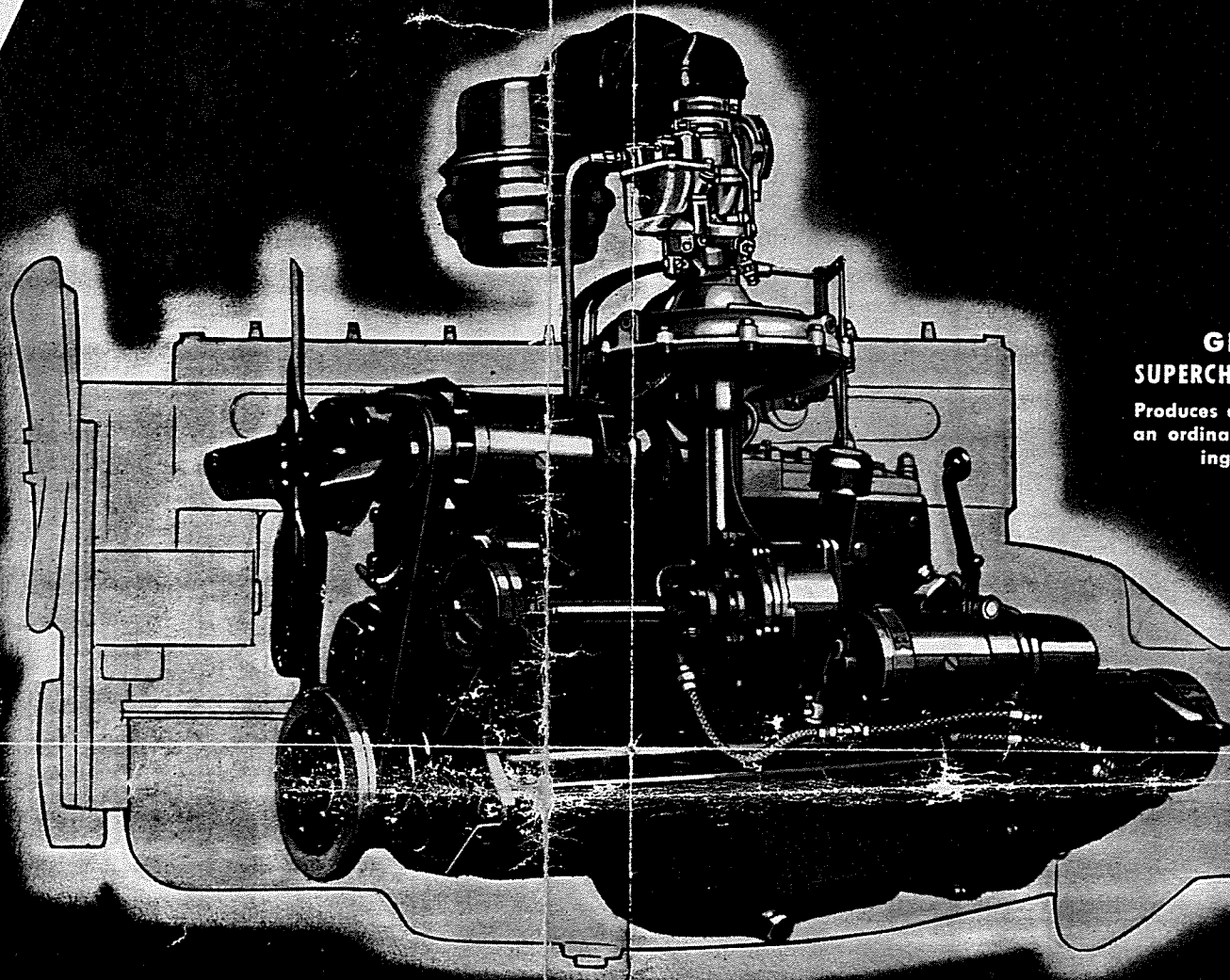
THE *Graham* COMBINATION COUPE



THE *Graham* FOUR DOOR SEDAN



THE *Graham* TWO DOOR SEDAN

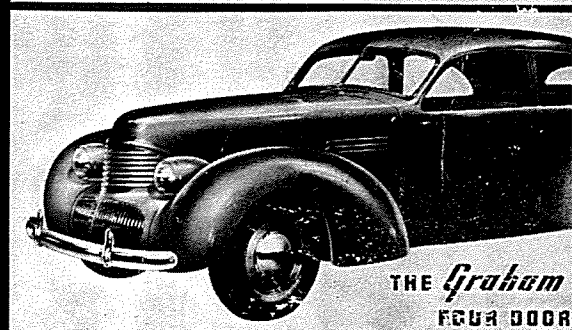


GRAHAM SUPERCHARGED ENGINE

Produces as much power as an ordinary engine weighing 30% more.



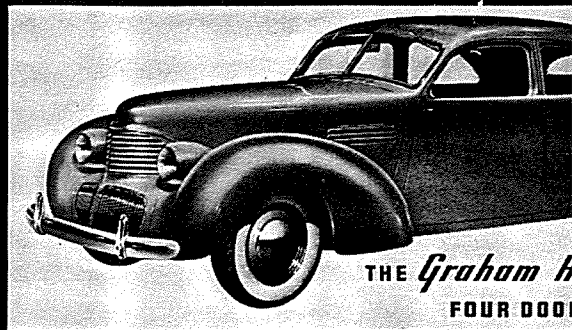
THE *Graham Clipper* CONVERTIBLE COUPE



THE *Graham* FOUR DOOR



THE *Graham Hollywood* CONVERTIBLE COUPE

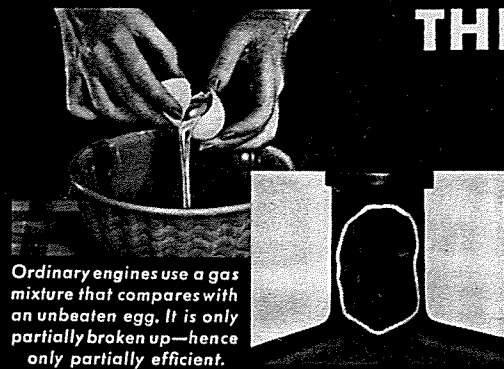


THE *Graham* FOUR DOOR

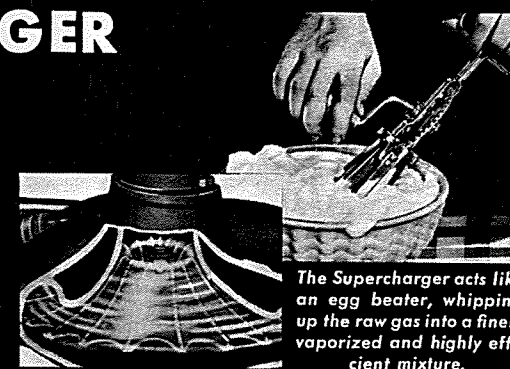
THE GRAHAM SUPERCHARGER

On land, on sea, and in the air, supercharged engines hold all records for performance, speed and economy in fuel consumption.

Graham makes Supercharged performance available to motorists at ordinary car cost!



Ordinary engines use a gas mixture that compares with an unbeaten egg. It is only partially broken up—hence only partially efficient.



The Supercharger acts like an egg beater, whipping up the raw gas into a finely vaporized and highly efficient mixture.

• Distinctive, smart, harmonious in every line and detail, Graham is still the Style Leader. You'll be proud to own one of these truly different cars—proud of its striking beauty, its sparkling performance. . . . And the Graham "Triple-Sealed" motor, with Instantaneous Cylinder Wall Lubrication, Full Length Water Jackets, and other famous Graham features, is your assurance of long-lasting, trouble-free performance.

IN AN ORDINARY ENGINE, the fuel is drawn through the carburetor directly to the cylinders by piston suction.

In a Supercharged engine, gas from the carburetor goes into the supercharger, where the rotor, revolving at 5.75 times engine speed, mixes air with the gas and forces this leaner, more efficient mixture evenly into all cylinders.

Because every cylinder receives an even fuel charge, and because a leaner, more efficient fuel mixture is used, the Graham supercharged engine produces *more power on less gas* than any unsupercharged engine of comparable size and weight!

Others may make economy "claims," but Graham's economy has been proved in actual competition. The Graham Supercharger is National A.A.A. Economy Champion by virtue of winning the Gilmore-Yosemite Economy Sweepstakes three years in a row. No other car in motoring history has ever won this classic two years in succession—yet Graham won it *three times* in succession!

Put Graham's claims to the test. Experience first hand the utterly different brand of performance obtainable from the Graham Supercharger. You will be amazed with the increased Economy, Power, Acceleration, and all-round Engine Efficiency.

• Exciting—gay—carefree! The Graham and the Graham Hollywood models—companions to the Graham master line—thrilled with the dashing lines of these slung beauties. . . . You will thrill, to sparkling performance. For they, too, reared with the famous Graham motor, the great modern Graham plant to the commands of Graham engineers and Graham